

Another NORTON of Michigan

AUCTION[®]

SCAREWORLD SCREAM PARK
6 Different Portable Haunts Selling Piecemeal



WEDNESDAY,
JULY 23rd



CLAYMONT,
DELAWARE



DAVID A. NORTON'S
NORTON AUCTIONEERS
OF MICHIGAN INCORPORATED

PROFESSIONAL AUCTIONEERS



Price
\$10.00

NATIONALLY RECOGNIZED AWARD-WINNING AUCTIONEERS

Worldwide Amusement Auctioneers and Appraisers, Selling the Unusual, the Unique & Extraordinary!

AUCTION INFORMATION

THE AUCTION

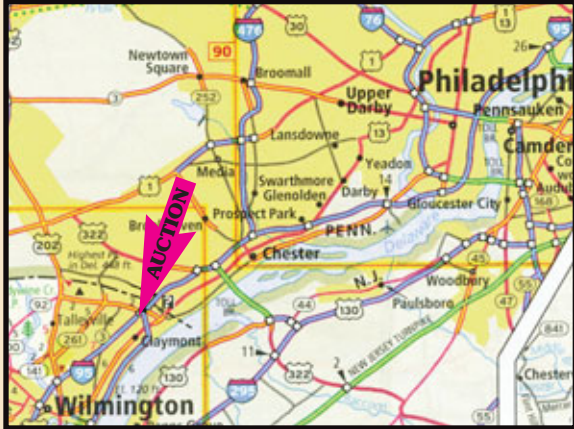
Due to various projects, Event Experts will not operate these haunts in 2008.

AUCTION DATE

Wednesday, July 23rd at 10:30 a.m. ETZ

AUCTION LOCATION

Will be set up under tent at the Tri-State Mall at the intersection of I-95 and Route 92 in Claymont, Delaware. Approximately 8 miles from Philadelphia Airport.



AIR TRAVEL

Philadelphia's International Airport is approximately 8 miles from auction site.

CAR RENTAL

HERTZ 800-654-3131 AVIS800-331-1212
 BUDGET 800-527-0700 NATIONAL.....800-227-7368
 DOLLAR 800-421-9633 ALAMO800-327-9633
 (Call travel agent for local car rental)

TRAVEL AGENCY

ALL SEASONS TRAVEL is the official travel agent for all NORTON Auctions. Competent, trustworthy and economical service for all plane, train, hotel and car reservations. Phone 800-554-9394 or 517-279-7924. Advise you are attending a NORTON Auction for prompt service.

LODGING

Auction Host Headquarters

Holiday Inn Select

630 Naamans Road • Claymont, Delaware
 Tel: 302.792.2700 • Fax: 302.798.6182

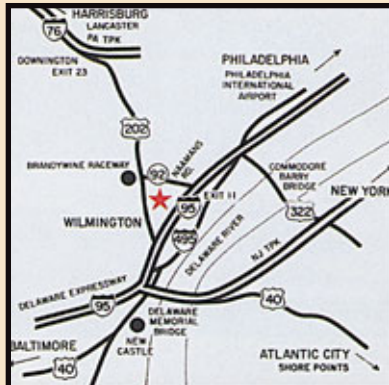
Ask for Special Norton Auction Rate of \$119⁰⁰



Directions:

From Philadelphia and Philadelphia International Airport take I-95 South to 495 South to Naamans Rd. (Rte. 92) Exit 6 and make a right onto Naamans Rd. (West). The hotel is on the left.

From Southern Delaware/Maryland, take I-95 North to Naamans Rd. (Rte. 92) Exit 11 and make a left onto Naamans Rd. The hotel is immediately on the left.



TERMS

Our terms are strictly adhered to, so come prepared! All items must be paid for in full on day of sale! No items can be removed until settled for in full. Payment must be made by cash, certified or cashier's check. **NO** company or personal checks will be accepted **UNLESS** accompanied by a letter of credit from your bank which **GUARANTEES** your check up to a specific amount! All items are sold as is, where is, without any warranties whatsoever whether expressed or implied. Buyer is responsible for any and all applicable taxes. Your banker may FAX a letter of credit to 517-279-9191 for prior approval.

Although statements made in this catalog and those made by the auctioneer have come from what are thought to be reliable sources, purchaser must understand he is buying property entirely upon his own examination and opinion. Any announcements made sale day take precedence over printed matter, regarding condition and description of enclosed items.

YOUR BANK LETTERHEAD		DATE
NORTON AUCTIONEERS Pearl at Monroe Coldwater, MI 49036 RE: (Bidder's Name)		
SAMPLE		
Dear Sirs: This letter will serve as notification that our bank will irrevocably honor and guarantee payment of any check written by (Your Name) up to the amount of (\$ Amount to be Guaranteed) and drawn on this bank's account number (Your Account Number). This guarantee is for purchases at your Auction held in Claymont, Delaware on Wednesday, July 23rd, 2008.		
Sincerely,		
_____ Bank Officer's Signature & Title		
Phone	Home Phone	

BUYER'S PREMIUM

A premium of 10% (ten percent) of the successful bid price will be added to the bid as part of the total price.

ADMISSION

No admission will be charged.

REGISTRATION

You may register for a buyers number during the preview inspection hours. Be sure to bring your bank letter of guarantee if it has not already been sent to our offices.

SALES TAX

Delaware does not have a sales tax.

PREVIEW INSPECTION

Tuesday, July 22 from 4-6 p.m. and auction morning at 8:00 a.m.

SPECIALTY INSURANCE COMPANIES

Allied Specialty800-237-3355
 Haas & Wilkerson800-821-7703
 K & K260-459-5637

REMOVAL

Auction day until 7 p.m. and Thursday, July 24th 8 a.m. to 1 p.m.

INFORMATION

David A. Norton at (517) 279-9063 Mon-Fri 9 a.m. - 5 p.m. ETZ
 or Dennis Rzaca at Event Experts (610) 522-6203.

ABSENTEE BIDDING

See requirements on our website: nortonauctioneers.com.

AUCTION LICENSE

Norton Auctioneers License no. 2008600451

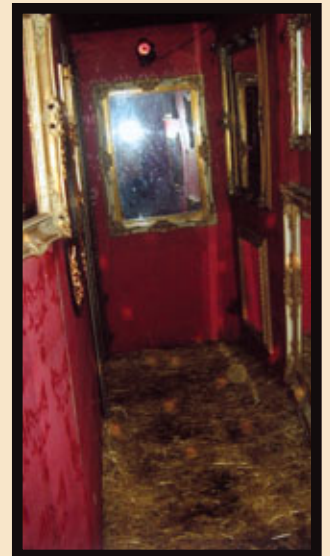
ADDRESS CORRECT? WANT TO BE ON OUR MAILING LIST?
 If your address has changed or if you want to be on our mailing list, please print address below, with zip, and return with label attached on other side.

NAME _____
 ADDRESS _____
 CITY _____
 STATE/PROV. _____ ZIP+4 _____

ADDRESS CHANGE ADD TO MAILING LIST

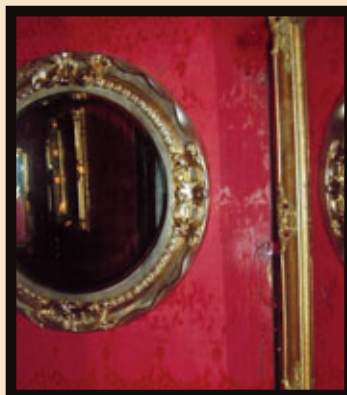
DUPLICATE MAILINGS? If you're receiving more than one of the same catalog, send us all the mailing labels, indicating the correct one. Or call us. We'll correct the situation.

NORTON of Michigan WELCOMES YOU to DELAWARE



**EVERY ITEM SELLS TO THE HIGHEST BIDDER!
No Minimum Price! No Reserve! Sells at Absolute Auction!**

SELLING HAUNTS AT AUCTION NATIONWIDE



AUCTION LEADERSHIP WORLDWIDE



1966 • NORTON AUCTIONEERS • 2008

13 FLOORS

- Square Footage - 4800
Total Panels - 169
4x8 Panels - 40
8x8 Panels - 119
4x8 Cage Panels - 10
1 Inflatable Facade (Hotel Theme)
5x80x18
2 Crests (Family Shields)
1 Piano
1 Red Velvet Chair
2 Regular Cuchning Chairs
14 Portraits
1 Wheelchair W/Skeleton
2 Candle Holders
4 Torture Cages
4 Foam Tombs
4 Wooden Coffins
1 Old Fashion Lawn Mower
1 Stroller
1 Skeleton Bride W/Skeleton Baby
2 Bloody Skinned Horses
2 Drums Filled W/Bloody Foam
Body Parts
10 Gurneys
4 Molded Dead Corps
2 Heart Monitors
1 Shock Paddle Machine
6 Metal Racks
2 Dentist Chairs
1 Metal Table
1 Metal Cage W/Door (3x5x5)
2 Steel Electric Chairs
1 Old Generator (Not Working)
3 Hugh Electric Boxes
2 Skeleton Filled Barrels W/Electric
2 Skeletons
10 Vacuform Skeleton Panels
2 Stretchy Walls
1 Water Buffalo Head
1 Full Body Black Bear (4 ft. Tall)
1 Table W/Lamp
1 Container Full Of Library Books
1 Chair W/Skeleton
3 Chests
1 TV W/TV Stand
2 Wicker Shelves
2 Windows W/Curtains
1 Park Bench
1 Chandelier
5 50gal. Drums Filled W/Camo

13 FLOORS PROPS

- 1 Elevator
1 Chair Jumper
1 Duplication Of Salvani Table
1 Polar Bear Water Spitter
1 Raging Beast
1 Shutter Jumper
1 Bed Pop Out
1 Spark Fence
1 Girl Monster Pop Out

KING TUT

Square Footage - 4000

- Total Panels (4x8) - 218
Total Facade Panels - 81
Total Luon Panels - 40
11 Mummy Boxes
3 Crypts (2x9x8)
12 Cemetary Fence (8ft)
6 Cemetary Fence (4ft)
1 Archway
7 Gothic Coves
3 Coffins
20+ Gravestones
4 Skeleton
1 3 Piece Foam Archway
1 Gold Baby Skeleton Archway
1 Anubis
1 Royal Security Skeleton
1 Gold Coffin
1 Foam Sarcophagus
10 Rolls Of Bambo
7 Barrels Of Camo
1 Fberglass Head Of King Tut For
Facade (4x10x10)

KING TUT PROPS

- 1 Pigme Air Spitter
1 Demon Pop Out
1 Cloak Air Spitter
1 Royal Security Pop Out
1 Snake Pop Up
2 Air Cannons

CELL BLOCK

- Square Footage - 2100
Total Cage Linked Fence (4x8) - 135
Total Panels (4x8) - 57
Total Facade Panel - 55
3 Beds
1 TV
1 Restraint Hand Cart
2 Swat Guys
50+ 50 Gallon Drums
4 Cage Linked Fence (4x12)

CELL BLOCK PROPS

- 1 Vibrating Barrel
1 Air Machine Gun
1 Pop Up Barrel
1 Electric Chair W/Shaking Man
1 Pop Out Spitter
1 Vibrating Bridge
1 Straight Jacket Shaker
1 Puker
1 Shaking Electric Chair W/Fog
1 Air Cannon

MANSION

- Square Footage - 4000
Total Panels (4x8) - 332
1 Skeleton W/Wings
2 Candle Racks
1 Rubber Rat
1 Refrigerator
1 Kitchen Table
1 Skeleton Chandelier
1 Coco Clock
1 Bureau

- 1 Dresser W/Mirror
1 Moving Drawers
1 Bed
2 Closet Racks W/Clothes
4 Library Racks (6in x 1 x 12)
4 Velvet Printed Pictures
2 Man Riding Dragons
1 Latex Skeleton
2 Hanging Spiders
12 Toxic Pipes (Plastic)
3 Holographic Pictures
5 Paintings W/Frames
15 Mirrors W/Frames
1 Foam Butler
1 Exorcist Girl
2 Brown Spiders (2x2)
1 Mummy
2 Tubs Of Bloody Doll Parts
3 Fence (2x3)
2 Alpha Blocks (2x2)
1 Kiddy Clock
2 Body Bags
1 Crypt Box (3x5x4)
2 Hanging Ghosts
2 Fans
2 Wooden Shelves
3 Hanging Skeleton
1 Tub Full Of Bones
1 Frighten Kid
4 Metal Grids
1 Devil (Full Body)

MANSION PROPS

- 1 Coffinator
1 Trunkulator
1 Drop Down Spider
1 Vibrating Barrel
1 Pop Up Barrel W/Siren
1 Toxic Puker
4 Door Knockers
1 Pop Up Devil Doll
1 Manual Toy Chest
1 Pop Up Laboratory Table
1 Spark Fence
1 Manual Collapsing Hallway
2 Air Cannons

BUTCHER SHOP

- Square Footage - 2100
Total Panels - 67
Total Panels (4x8) - 15
Total Panels (8x8) - 52
100+2x3x8 Facade Panels
20 Luon 4x8 Panels
2 Stainless Steel Deli Counter
(5x8x4)
2 Stainless Steel Warmer (2x2x4)
(4x4x7)
3 Storage Freezer 1-(2x4x3.5)
2-(4x5x7)
4 Autopsy Tables W/Bodys
1 Torture Cage W/Skeliton
4 Freezer Racks
1 Hanging Body
1 Cooler (2x2x3)
1 Gurney

- 4 Tubs of Bloody Body Parts
1 Tub of Bones
2 Battery Operated Chainsaws

BUTCHER SHOP PROPS

- 2 Shakers (1 Unit)
1 Slaughter Pig
1 Autopsy Snake Pop Out
1 Buzz Saw
1 Air Cannon

3-D

Square Footage - 3200
Total 4x8 Panels - 176
Cage Linked Fence - 17

FACADE

Luon 4x8 Panels - 38 (3-D Art Work)
9 Vinyl 3-D Art Work
30 3-D Barrels
3 Drums Of Camo (Blue & Orange)

PROPS

- 2 Air Cannons
1 Pop Up Barrel
1 Spitter
1 Shaker
1 Dog Pop Out
1 Bat Pop Out
4 Vibrating Barrels
1 Vortex Tunnel With Ramps In/Out
1 Shutter Jumper

TENTS

Assorted 40' x 80' and 40' x 100'

ELECTRIC HARNESSES

- 5 13 Floors
4 Mansion
2 King Tut
1 Cell Block
5 3-D
2 Butcher
1 Dungeon

12 Ft High Castle Facade

Total Panels (4x8) - 120
Total Panels (4x4) - 32

- 1 Fiberglass Skull (4 X 6 X 15/16)

Lighting

Beacon Lights
Strobe Lights
Theatrical Lights W/Fixtures
Black Light W/Fixtures
Flood Lights W/Fixtures
Low Voltage Lights
Par Can Lights

Inventory For Lighting Will Come At
Later Date. There Is Just So Much Of It.

Plus

(10±) 48' to 53' Semi Trailers

Another NORTON of Michigan AUCTION!

THE AUCTION SCENE

RIDDLE:

You are on a horse galloping at a constant speed. On your right side is a sharp drop off and on your left side is an elephant traveling at the same speed as you. Directly in front of you is a galloping Kangaroo and your horse is unable to overtake it. Behind you is a lion running at the same speed as you and the kangaroo. What must you do to get out of this extremely dangerous situation?

↓ Turn Over ↓

Get off the merry-go-round!



If You Contemplate An...

AUCTION®

NORTON of Michigan



IS THE NAME TO REMEMBER!

OUR 42nd YEAR!

Since 1966 the NORTON group has become one of the world's most respected and recognized auction firms. We offer our clients a complete, professional and comprehensive auction marketing package that is second to none and based upon the ultimate in experience, expertise and trust. Successful auctions are synonymous with NORTON.

The world's foremost auctioneers of the unusual including:

- Amusement Parks
- Carousels
- Tourist Attractions
- Private Collections
- Arcade Machines
- Restaurants
- Trains
- Water Parks
- FEC's
- Campgrounds
- Golf Courses
- Antique & Classic Boats
- Carnivals
- Museums
- Zoos
- Parks
- Musical and Gaming Devices
- Circuses
- Miniature Golf Courses
- Haunted Attractions
- Rental Companies
- Corporate Picnic Parks

You too can benefit from a NORTON auction. Put our expertise and experience to work for you by turning idle assets into productive cash.

PHONE (517) 279-9063

DAVID A. NORTON'S

**NORTON AUCTIONEERS
OF MICHIGAN INCORPORATED
PROFESSIONAL AUCTIONEERS**



PEARL AT MONROE COLDWATER, MICHIGAN, USA 49036-1967
(517) 279-9063 FAX: (517) 279-9191

E-mail: nortonsold@cbpu.com www.nortonauctioneers.com

NATIONALLY RECOGNIZED AWARD-WINNING AUCTIONEERS

Worldwide Amusement Auctioneers and Appraisers, Selling the Unusual, the Unique & Extraordinary!

FORWARDING SERVICE REQUESTED



DAVID A. NORTON'S
NORTON AUCTIONEERS
OF MICHIGAN INCORPORATED
PROFESSIONAL AUCTIONEERS

PEARL AT MONROE COLDWATER, MICHIGAN, USA 49036-1967
NATIONALLY RECOGNIZED AWARD-WINNING AUCTIONEERS

First Class Mail
U.S. Postage
PAID
Coldwater, MI
Permit No. 91

FIRST CLASS MAIL

NORTON of Michigan

of AUCTION®

“SCREAM PARK”

Wednesday ★ July 23rd
Claymont, Delaware

JULY						
S	M	T	W	T	F	S
		1	2	3	4	5
6	7	8	9	10	11	12
13	14	15	16	17	18	19
20	21	22	★ 23	24	25	26
27	28	29	30	31		



Another NORTON of Michigan AUCTION!